

22 st. folklåtar, upptecknade efter

Johan Schedin, Hedekåsbo, Nora s:n.

(Fiol)

Inde upptecknade av Gunnar Nordström

1.
Solska. efter J. Schedin

Handwritten musical score for "Solska" by Johan Schedin. The score is written on five staves in G major and 3/4 time. It features various musical notations including chords, triplets, and ornaments. The first staff begins with a treble clef, a key signature of one sharp (F#), and a 3/4 time signature. The music consists of five staves of notation, with the fifth staff ending in a double bar line. Below the fifth staff are three empty staves.



Nº 14.

21

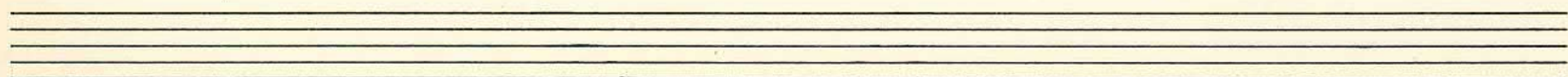
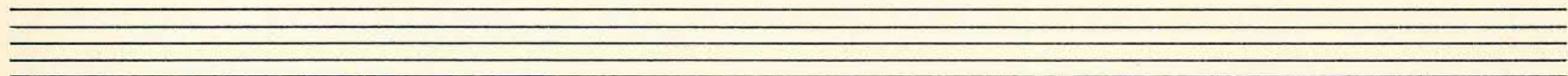
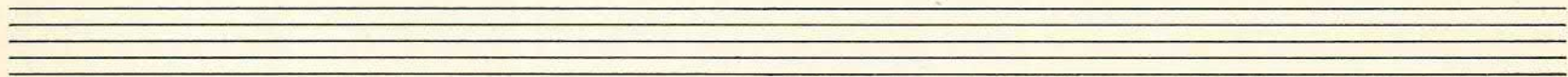
Vals efter J. Schedin



Nº 14.

Solska efter J. Schedin.

Handwritten musical score for 'Solska efter J. Schedin.' The score is written on three staves in G major (one sharp) and 2/4 time. The first staff contains the first six measures. The second staff contains measures 7-12, including a repeat sign and a fermata. The third staff contains measures 13-18, ending with a double bar line. The notation includes various note values, rests, and ornaments.



4
Solska. efter J. Schedin

Handwritten musical score for 'Solska' by Johan Schedin. The score consists of five staves of music in 3/4 time, featuring treble clefs and a key signature of one sharp (F#). The notation includes various rhythmic values, accidentals, and dynamic markings such as 'p' and 'f'. The piece concludes with a double bar line and repeat dots on the fifth staff.



Nº 14.

5

Bolska efter J. Schedin

Handwritten musical notation for 'Bolska efter J. Schedin'. The score consists of four staves of music, each beginning with a treble clef. The notation includes various rhythmic values, accidentals (sharps and naturals), and phrasing slurs. The first staff contains four measures. The second staff contains four measures, ending with a double bar line and repeat dots. The third staff contains four measures, with some notes marked with a cross symbol. The fourth staff contains four measures, also ending with a double bar line and repeat dots. Below the first four staves are two sets of empty five-line staves.



№ 14.

6

Vals. efter J. Scherlin



№ 14.

7

Vals. efter J. Schedin



Nº 14.

8

Balska efter J. Lohedn

And.

Fine

*Dal segno
al fine*

Brio



Nº 14.

Balska efter J. Schedin

A handwritten musical score for a piece titled "Balska efter J. Schedin". The score is written on five staves in treble clef with a key signature of one sharp (F#) and a 3/4 time signature. The notation includes various rhythmic values such as eighth and sixteenth notes, as well as rests. There are two instances of a triplet of eighth notes, each marked with a circled "3". The piece concludes with a double bar line. The handwriting is in dark ink on aged, yellowish paper.



No 14.

Balska efter J. Schedin

Handwritten musical score for 'Balska efter J. Schedin'. The score is written on five staves in treble clef, 3/4 time, with a key signature of one sharp (F#). The music features a variety of rhythmic patterns, including eighth and sixteenth notes, and rests. A double bar line with repeat dots is used to indicate a section. A 'Bis.' marking is present above the second staff. The score concludes with a final double bar line.



vals. aft. J. Schedin

The image shows a handwritten musical score for a waltz. The music is written on five staves in treble clef with a 3/4 time signature. The key signature has one sharp (F#). The notation includes various note values, rests, and dynamic markings. The first staff begins with a treble clef and a 3/4 time signature. The second staff contains a repeat sign. The third and fourth staves feature complex chordal structures with many beamed notes. The fifth staff ends with a repeat sign. Below the fifth staff are three empty staves.



No 14.

Bolska efter J. Schedin



13.

Bolska efter J. Schedin

A handwritten musical score for a piece titled "Bolska efter J. Schedin". The score is written on six staves in G major (one sharp) and 3/4 time. The first staff begins with a treble clef, a key signature of one sharp (F#), and a 3/4 time signature. The music consists of a series of eighth and sixteenth notes, with some slurs and accents. The second staff features two first endings, labeled "I." and "II.", which lead to different conclusions of the piece. The third and fourth staves contain triplet markings over groups of three notes. The fifth staff continues the melodic line with various rhythmic patterns. The sixth staff concludes the piece with a double bar line.

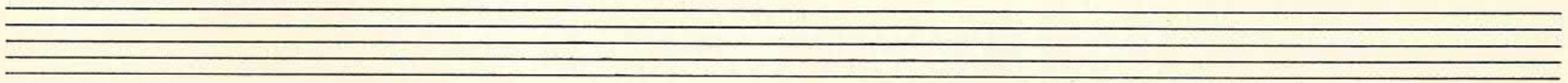
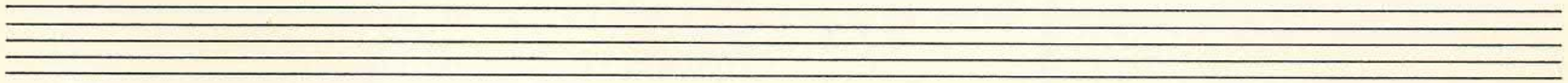
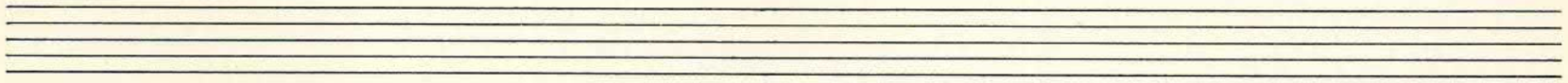


Nº 14.

Vals efter J. Schedin

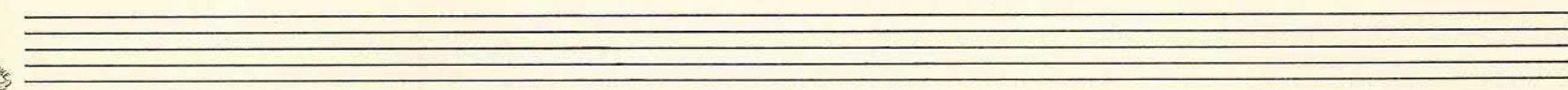
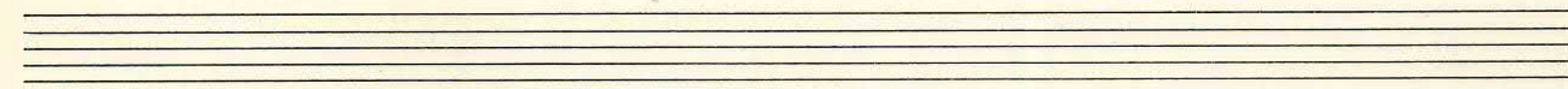
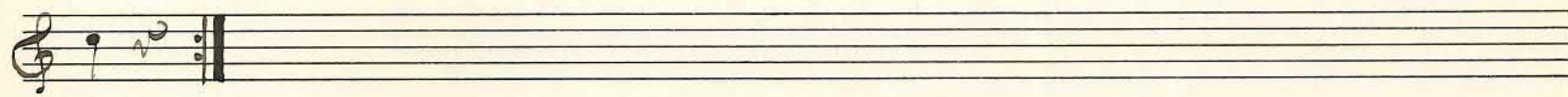
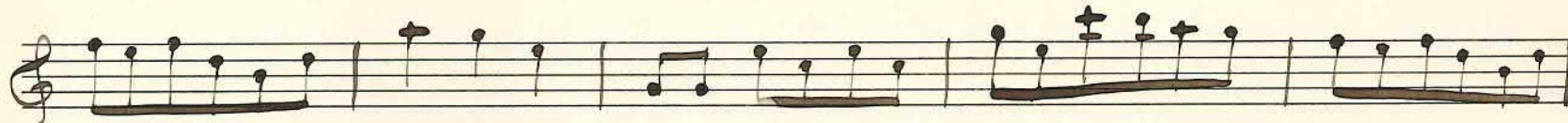
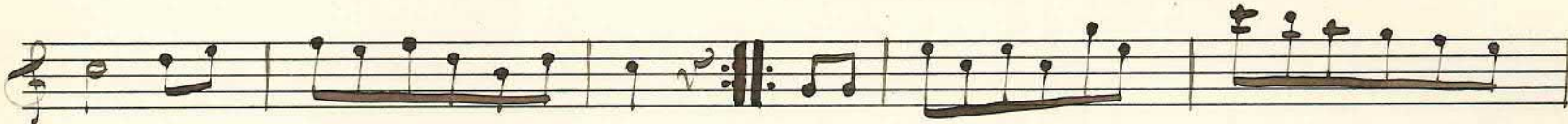


Kvals. after J. Schedin



16

Vals, efter J. Scherwin



Nº 14.

Vals. efter J. Schedin

Handwritten musical score for a waltz by Johan Schedin. The score consists of six staves of music in 3/4 time, featuring a melody and accompaniment. The notation includes treble clefs, a key signature of one flat (B-flat), and various rhythmic values such as eighth and sixteenth notes. The piece concludes with a double bar line and repeat dots.

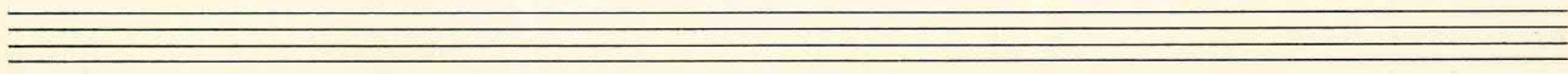
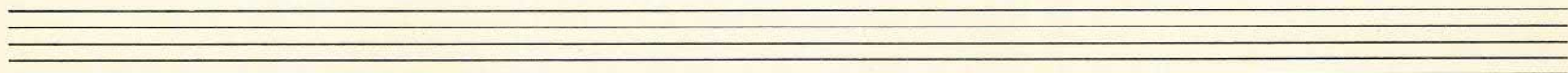
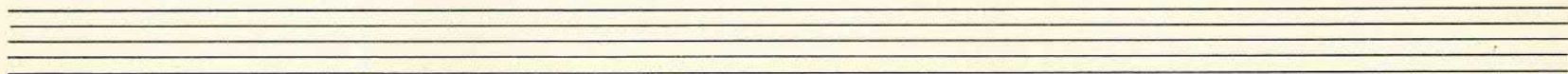
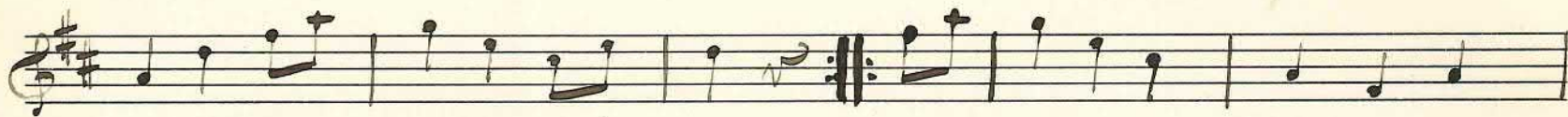


äfter
Vals. Schedin

A handwritten musical score for a waltz, consisting of six staves of music. The key signature is one sharp (F#) and the time signature is 3/4. The notation includes various note values, rests, and dynamic markings such as 'p.' (piano). There are several repeat signs with first and second endings indicated by 'I.' and 'II.'. The music is written in a cursive, handwritten style.



Vals. öfver J. Schedin



Wals efter J. Schedin

Handwritten musical notation for a waltz in 3/4 time, consisting of three staves. The first staff contains a single melodic line. The second staff contains a single melodic line with a repeat sign at the end. The third staff contains a chordal accompaniment with various chord symbols written above the notes.

Three sets of empty musical staves, each consisting of five lines.



21

Vals efter J. Schedin

Handwritten musical score for a waltz in G major, 3/4 time. The score consists of three staves. The first staff contains the main melody. The second staff features a first ending (I.) and a second ending (II.) with repeat signs. The third staff continues the melody and concludes with a double bar line and repeat dots. The key signature has one sharp (F#) and the time signature is 3/4.

Three empty musical staves for accompaniment or further notation.



No 14.

Solska efter J. Schedin

Handwritten musical score for 'Solska efter J. Schedin'. The score is written on four staves in G major and 2/4 time. The first staff begins with a treble clef, a key signature of one sharp (F#), and a 2/4 time signature. The melody features several triplet figures, with the first two triplets marked with the number '3' above them. The second staff continues the melody, also containing triplet figures. The third staff shows a more complex rhythmic pattern with many eighth notes. The fourth staff concludes the piece with a double bar line and repeat dots. The paper shows signs of age, including some staining and discoloration.

